

FP-CTR-502 AND cFP-CTR-502

8-Channel, 16-Bit Counter Module

These operating instructions describe how to install and use the National Instruments FP-CTR-502 and cFP-CTR-502 counter modules (referred to inclusively as the [c]FP-CTR-502). For details on configuring and accessing the [c]FP-CTR-502 over a network, refer to the user manual for the FieldPoint network module you are using.

Features

The [c]FP-CTR-502 is a FieldPoint counter module with the following features:

- Eight 16-bit counters with individual count input terminals
- Four gate input-channels configurable as either gates or discrete inputs
- Four output channels configurable as generic discrete outputs or associated outputs for the count-input channels
- Internal frequency references of 1 kHz and 32 kHz
- Internally cascadable counters
- 5–30 VDC sourcing inputs and sinking outputs, compatible with TTL devices and other 5, 12, or 24 VDC devices
- Software-enabled 50 kHz or 200 Hz lowpass filter on count-input channels
- On/Off LED indicators
- 2,300 V_{rms} transient overvoltage protection between the inter-module communication bus and the I/O channels
- –40 to 70 °C operation
- Hot plug-and-play

FieldPoint™, National Instruments™, NI™, and ni.com™ are trademarks of National Instruments Corporation. Product and company names mentioned herein are trademarks or trade names of their respective companies. For patents covering National Instruments products, refer to the appropriate location: **Help»Patents** in your software, the `patents.txt` file on your CD, or `ni.com/patents`.

Installing the FP-CTR-502

The FP-CTR-502 mounts on a FieldPoint terminal base (FP-TB-*x*). Hot plug-and-play enables you to install the FP-CTR-502 onto a powered terminal base without disturbing the operation of other modules or terminal bases. The FP-CTR-502 receives operating power from the terminal base.

To install the FP-CTR-502, refer to Figure 1 and complete the following steps:

1. Slide the terminal base key to either position X, used for any module, or position 8, used for the FP-CTR-502 module.
2. Align the FP-CTR-502 alignment slots with the guide rails on the terminal base.
3. Press firmly to seat the FP-CTR-502 on the terminal base. When the module is firmly seated, the terminal base latch locks it into place.

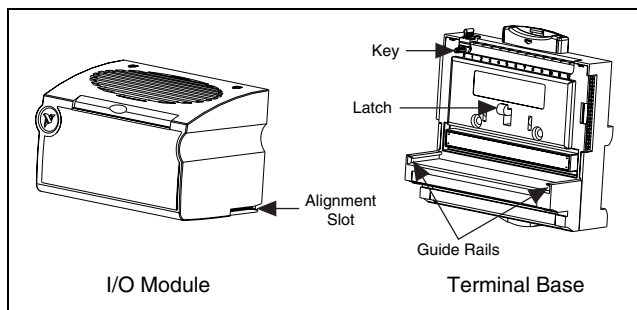


Figure 1. Installing the FP-CTR-502

Installing the cFP-CTR-502

The cFP-CTR-502 mounts on a FieldPoint backplane (cFP-BP-*x*). Hot plug-and-play enables you to install the cFP-CTR-502 onto a powered backplane without disturbing the operation of other modules or connector blocks. The cFP-CTR-502 receives operating power from the backplane.

To install the cFP-CTR-502, refer to Figure 2 and complete the following steps:

1. Align the captive screws on the cFP-CTR-502 with the holes on the backplane. The alignment keys on the cFP-CTR-502 prevent backward insertion.
2. Press firmly to seat the cFP-CTR-502 on the backplane.
3. Using a number 2 Phillips screwdriver with a shank of at least 64 mm (2.5 in.) length, tighten the captive screws to 1.1 N · m (10 lb · in.) of torque. The nylon coating on the screws prevents them from loosening.

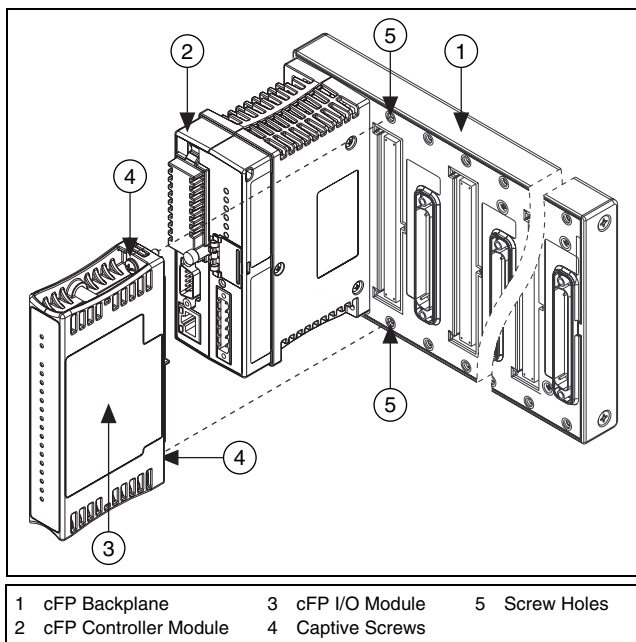


Figure 2. Installing the cFP-CTR-502

Wiring the [c]FP-CTR-502

The FP-TB-*x* terminal bases provide connections for each FP-CTR-502 channel and for an external power supply. The cFP-CB-*x* connector blocks provide the same connections for the cFP-CTR-502. The external power supply powers the

[c]FP-CTR-502 input channels and field devices. Although the module does not need the external supply for its internal operation, the input channels source current from this external supply and require it to operate.

Table 1 lists the terminal assignments for the signals of each channel. Terminal assignments and wiring diagrams are also listed on the side panel of the cFP-CTR-502 and under the slide-in card on the front of the FP-CTR-502 module.

Table 1. Terminal Assignments

Channel on Module Label	Channel in Software	Terminal Numbers		
		V_{in} or V_{out}	V_{sup}	COM
Count Inputs				
Count Input 0	Channel 0	1	17	18
Count Input 1	Channel 1	2	17	18
Count Input 2	Channel 2	3	19	20
Count Input 3	Channel 3	4	19	20
Count Input 4	Channel 4	5	21	22
Count Input 5	Channel 5	6	21	22
Count Input 6	Channel 6	7	23	24
Count Input 7	Channel 7	8	23	24
Discrete Inputs				
Gate 0	Channel 8	9	25	26
Gate 1	Channel 9	10	25	26
Gate 2	Channel 10	11	27	28
Gate 3	Channel 11	12	27	28
Discrete Outputs				
Output 0	Channel 12	13	29	30
Output 1	Channel 13	14	29	30
Output 2	Channel 14	15	31	32
Output 3	Channel 15	16	31	32

Inputs

Each input channel has one input terminal, V_{in} , which is referenced to the supply terminals, V and V_{sup} . Each channel also has V_{sup} and COM terminals that can supply power to field devices.

When choosing your external devices and power supply, keep in mind that the input-logic thresholds are defined by the power supply as detailed in the [Specifications](#) section.

$$\textit{typical}V_{actualThreshold} = V_{sup} - V_{\textit{typical}Threshold}$$

$$\textit{maximum}V_{actualThreshold} = V_{sup} - V_{\textit{maximum}Threshold}$$

$$\textit{minimum}V_{actualThreshold} = V_{sup} - V_{\textit{minimum}Threshold}$$

For example, if you connect an 18 V power supply to the [c]FP-CTR-502, the typical actual threshold below which the [c]FP-CTR-502 registers an ON state is 15.5 V; the maximum actual threshold below which the [c]FP-CTR-502 registers an ON state is 16 V; the minimum actual threshold below which the [c]FP-CTR-502 registers an ON state is 15 V.

$$\textit{typical}V_{actualThreshold} = (18) - 2.5 = 15.5$$

$$\textit{maximum}V_{actualThreshold} = (18) - 2 = 16$$

$$\textit{minimum}V_{actualThreshold} = (18) - 3 = 15$$

You can connect the eight count-input channels and four gate-input channels to devices with sinking outputs. The [c]FP-CTR-502 has *sourcing* inputs, which means the count-input and gate-input channels source current through the V_{in} terminals from V to a sinking-output device.

Make sure the sourcing-output devices have OFF state leakage currents of less than 0.3 mA so they do not send false ON state readings to the [c]FP-CTR-502.



Note You must use the same ground for all of the input channels on the [c]FP-CTR-502.

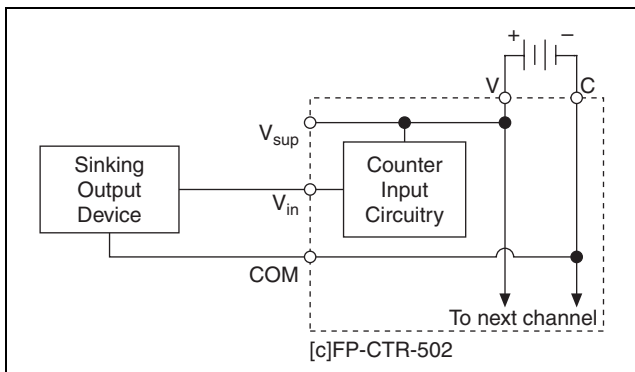


Figure 3. Wiring a Count-Input or Gate-Input Channel to a Sinking-Output Device

Outputs

Each output channel has one output terminal, V_{out} . Each channel also has V_{sup} and COM terminals that can supply power to field devices.

The [c]FP-CTR-502 has *sinking* outputs. Sinking outputs mean the outputs provide a path to supply common. You can connect the [c]FP-CTR-502 outputs to sourcing-input devices.

In the ON state, a transistor is turned on between the output (V_{out}) terminal and the common terminal (C or COM). In the OFF state, this transistor is turned off, allowing only a small leakage current to flow. Select the impedance of the loads driven into the output channels so that the current supplied by any one channel in the ON state is no more than 1 A.

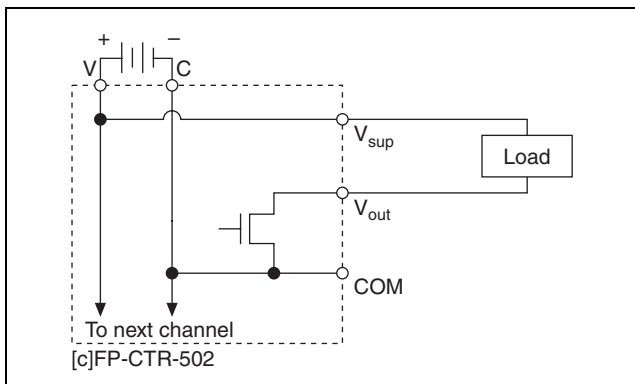


Figure 4. Wiring an Output Channel to a Sourcing-Input Device

If you connect a [c]FP-CTR-502 output to an externally powered sourcing-input device, be aware that the voltage applied to the V_{out} terminal by the external device must not exceed the voltage level of the power supply connected to the [c]FP-CTR-502.

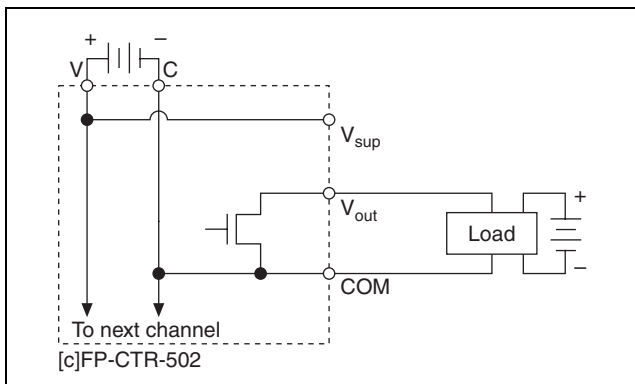


Figure 5. Wiring an Output to an Externally Powered Sourcing-Input Device

Configuring Count-Input Channels

Channels 0–7 are count-input channels. In FieldPoint software, you can configure each count-input channel to operate with attributes and commands. In the Channel Configuration dialog box, select attributes for each channel from the Attributes menu

and commands from the Commands menu. The following sections describe the different attributes and commands you can select when you are configuring the count-input channels. For more information about using FieldPoint software, refer to the user manual for the FieldPoint network module you are using with the [c]FP-CTR-502.

Terminal Count

To set the terminal count, enter a value from 0 to 65,535 in the Value field. The default value is 65,535. When the count-input channel exceeds its terminal count, the count resets to 0 and triggers any outputs associated with it. For more information about associating outputs with a count-input channel, refer to the [Configuring Output Channels](#) section. The count-input channel also sends a count trigger to the next count-input channel if the channel is set to use the previous channel as the count source.

Channel Status

When you are monitoring the [c]FP-CTR-502 in FieldPoint software, the [c]FP-CTR-502 reports one of the following statuses: **Successful** or **Overflow since last read**. The default channel status is **Successful**. If a count-input channel exceeds the terminal count, the channel resets to zero and starts counting again, and the channel status changes to **Overflow since last read**.

Count Source

Select one of the following count sources from the Value menu: **External Count Input**, **Previous Channel**, **1 kHz Reference**, or **32 kHz Reference**. Select **External Count Input**, **1 kHz Reference**, or **32 kHz Reference** to configure the channel so that it counts low-to-high (off-to-on or rising-edge) transitions of the count source.

Select **Previous Channel** if you want the channel to count the number of times that the previous count-input channel reaches its terminal value and resets to zero. You can configure multiple counters to operate as one large counter. You can slave Channel 1 to Channel 0, Channel 0 to Channel 7, Channel 7 to Channel 6, and so on. If you select this option for all of the channels, no counting occurs.

Gate Source

Select **Gate Input 0–3** from the Value menu to associate a gate-input channel with a count-input channel. If the count-input channel uses one of the external gate inputs, counting is enabled when the gate-input signal is on and disabled when it is off as shown in Figure 6. The gate-input signal is considered on when the voltage level is below the threshold. The external device determines the high and low intervals of the gate-input signal. If you do not associate a gate-input channel with the count-input channel, select **Always Disabled** or **Always Enabled**. Select **Always Enabled** if you want the count-input channel to count at all times, even if there is nothing wired to the channel. Always Enabled is the default value.

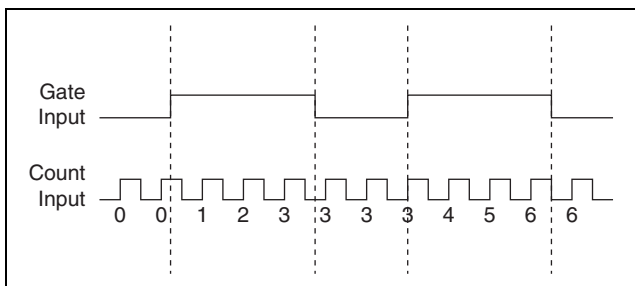


Figure 6. Gate Source Set to External Gate Input

Read Reset Mode

You can configure each count-input channel to reset each time the FieldPoint network module reads it by selecting **Reset on Read** from the Value menu. A read-initiated reset also resets any outputs associated with the target channel. The default is Don't Reset On Read.



Note Read Reset mode is not intended to be used with FieldPoint Ethernet network modules.

Noise Rejection

Each count-input channel has a software-enabled lowpass filter that you can set to reject frequencies above 200 Hz or 50 kHz. Select **200 Hz** or **50 kHz** from the Value menu to configure noise rejection. The default is 50 kHz.

Control

You can set the Control command to increment or reset by selecting **Increment** or **Reset** from the Action menu. The increment-control command increases the count-input channel in value by one. The reset-control command resets the count-input channel. The control commands ignore the gate-source setting and gate-input state.

Configuring Gate-Input Channels

Channels 8–11 are gate-input channels. The only difference between the input circuits of the gate-input channels and the count-input channels is that the gate-input channels do not have a programmable lowpass filter. The states of the gate inputs can always be read as simple discrete inputs on Channels 8–11.

You do not need to configure anything in software for the gate-input channels.

Configuring Output Channels

Channels 12–15 are discrete output channels. In the Channel Configuration dialog box of FieldPoint software, you can select different attributes from the Attributes menu. The following sections describe the different attributes you can select when you are configuring output channels.

Output Source

You can configure each output to operate either as an output for one of the eight count-input channels or as a generic discrete output. Select **Counter Channel 0–7** from the Value menu if you want the discrete output channel to operate as an output for a corresponding count-input channel. Select **Discrete Data** from the Value menu if you want to use this channel as a generic discrete output. When you write data to an output channel, you only affect the output state if you configure the Output Source as Discrete Data.

Output Mode

For each output channel select one of the following output modes from the Value menu: **Toggle, Reset Off**; **Toggle, Reset On**; **On Pulse**; or **Off Pulse**. The output modes only work if you select **Counter Channel 0–7** for the **Output Source**. The following sections describe the different output modes.

Toggle, Reset Off

In Toggle, Reset Off mode, the output channel starts low and goes high when the terminal count is exceeded. The output channel returns to low the next time the terminal count is exceeded or when you send a reset command to the associated count-input channel. In Figure 7, the terminal count is 4.

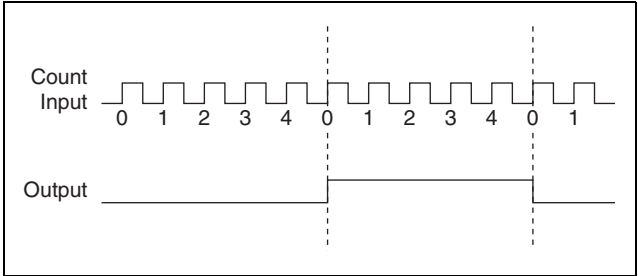


Figure 7. Output of a Channel Set to Toggle, Reset Off Mode

Toggle, Reset On

In Toggle, Reset On mode, the output channel starts high and goes low when the terminal count is exceeded. The output channel returns to high the next time the terminal count is exceeded or when you send a reset command to the associated count-input channel. In Figure 8, the terminal count is 4.

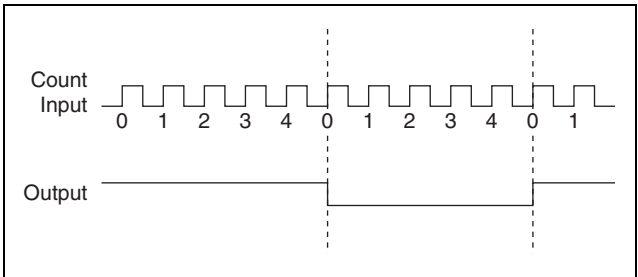


Figure 8. Output of a Channel Set to Toggle, Reset On Mode

On Pulse

In On Pulse mode, the output channel starts low and goes high when the terminal count is exceeded. The output channel returns to low after one count. In Figure 9, the terminal count is 4.

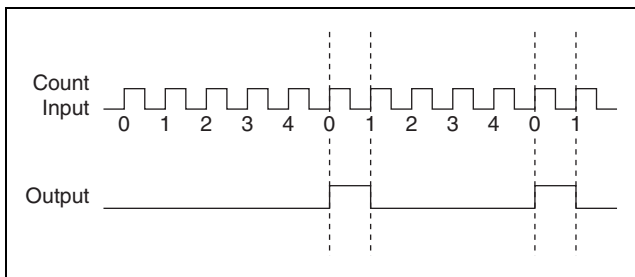


Figure 9. Output of a Channel Set to On Pulse Mode

Off Pulse

In Off Pulse mode, the output channel starts high and goes low when the terminal count is exceeded. The output channel returns to high after one count. In Figure 10, the terminal count is 4.

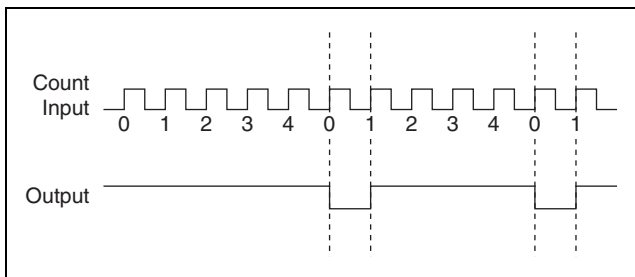


Figure 10. Output of a Channel Set to Off Pulse Mode

Application Note: Generating a Continuous Pulse Train

You can use two [c]FP-CTR-502 count-input channels and one output channel to generate a continuous pulse train with a controllable duty cycle and period. The first count-input channel serves as a clock prescaler and divides the input clock by a fixed value. This generates a slower clock for the second counter and the

second count-input channel is used as the pulse counter. One of the [c]FP-CTR-502 output channels uses the pulse counter as its output source.

Figure 11 shows a diagram the components of a continuous pulse train.

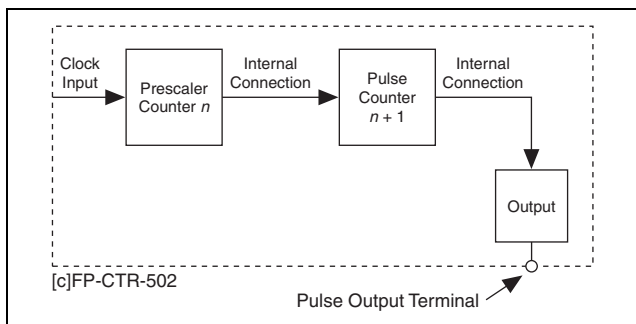


Figure 11. Continuous Pulse Train

Step 1. Set Up the Prescaler Counter

To set up the prescaler counter, complete the following steps:

1. If you do not need to scale the frequency of your clock input, you can configure the pulse counter to use the clock input directly instead of the prescaler counter. To set up the pulse counter, skip to *Step 2. Set Up the Pulse Counter*.
2. Select two count-input channels and an output channel to use. Select count-input channels that are numbered sequentially (for example, Channels 1 and 2, 5 and 6, or 7 and 0). The count-input channel with the lower number is the prescaler counter and the count-input channel with the higher number is the pulse counter.
3. Set the Gate Source attribute of the prescaler counter to **Always Enabled**, and set Read Reset Mode to **Don't Reset On Read**.
4. Set the Count Source of the prescaler counter to the clock on which you want to base your pulse train. This can be the external counter input or one of the [c]FP-CTR-502 internal references.
5. Subtract 1 from the value that you want to divide the input clock by, and set the terminal count of the prescaler counter to

the result. For example, a terminal count of 4 divides the input clock by 5. If you use the 1 kHz reference as the prescaler count source, this setting generates a 200 Hz clock for the pulse counter.

To determine the frequency of the prescaler output, use the following formula:

$$f_{pre} = \frac{f_{src}}{term_{pre} + 1}$$

where f_{pre} is the frequency of the prescaler counter output

f_{src} is the count-input frequency for the prescaler counter

$term_{pre}$ is the terminal count value for the prescaler counter

Step 2. Set Up the Pulse Counter

To set up the pulse counter, complete the following steps:

1. Set the Count Source of the pulse counter (the count-input channel with the higher number) to **Previous Channel** so that it uses the output from the prescaler counter.



Note If you are not using a prescaler counter, set the Count Source to the clock on which you want to base your pulse train.

2. Set the Read Reset Mode of the pulse counter to **Don't Reset On Read** and set the Gate Source to **Always Enabled**.
3. Subtract 1 from the value that you want to divide the count input by and set the Terminal Count of the pulse counter to the result.

The internal output from the pulse counter triggers the output channel that you selected for the pulse train output.

To determine the frequency of the output from the pulse counter, use the following formula:

$$f_{pulse} = \frac{f_{pre}}{term_{pulse} + 1}$$

where f_{pulse} is the pulse counter output frequency

f_{pre} is the prescaler counter output frequency

$term_{pulse}$ is the terminal count value for the pulse counter

Step 3. Configure the Pulse Train Output Channel

To configure the pulse train output channel, complete the following steps:

1. Set the Output Source of the output channel that you selected to the pulse-counter channel.
2. Set the Output Mode of the output channel. To generate a pulse train with variable duty cycle, use one of the pulse modes—On Pulse or Off Pulse. To generate a 50% duty-cycle pulse train, use one of the toggle modes.

To determine the duty cycle, use the following formulas:

For On Pulse mode, use

$$d = \frac{1}{term_{pulse} + 1}$$

For Off Pulse mode, use

$$d = 1 - \left(\frac{1}{term_{pulse} + 1} \right)$$

where d is the pulse train duty cycle

$term_{pulse}$ is the terminal count value for the pulse counter

When you set the output to one of the pulse modes, the frequency of the pulse train is the same as shown in [Step 2. Set Up the Pulse Counter](#) (f_{pulse}), but the output frequency is half this value when you set the output channel to one of the toggle modes.

Status Indicators

Figure 12 shows the status indicator LEDs on the [c]FP-CTR-502.

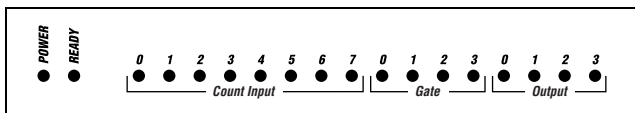


Figure 12. Status Indicators

The [c]FP-CTR-502 has two green status LEDs, **POWER** and **READY**. After you insert the FP-CTR-502 into a terminal base or cFP-CTR-502 into a backplane and apply power to the connected network module, the green **POWER** indicator lights and the

[c]FP-CTR-502 informs the network module of its presence. When the network module recognizes the [c]FP-CTR-502, it sends initial configuration information to the [c]FP-CTR-502. After receiving this initial information, the green **READY** indicator lights, and the [c]FP-CTR-502 is in normal operating mode.

In addition to the green **POWER** and **READY** indicators, each channel has a numbered, green status indicator that lights when the channel is in the ON state.

Upgrading the FieldPoint Firmware

You may need to upgrade the FieldPoint firmware when you add new I/O modules to the FieldPoint system. For more information on determining which firmware you need and how to upgrade the firmware, go to ni.com/info and enter `fpmatrix`.


Isolation and Safety Guidelines



Caution Read the following information before attempting to connect the [c]FP-CTR-502 to any circuits that may contain hazardous voltages.

This section describes the isolation of the [c]FP-CTR-502 and its compliance with international safety standards. The field wiring connections are isolated from the backplane and the inter-module communication bus. The isolation is provided by the module, which has optical and galvanic isolation barriers designed and tested to protect against transient fault voltages of up to $2,300 V_{\text{rms}}$.

Follow these guidelines to ensure a safe total system:

- The [c]FP-CTR-502 has a safety isolation barrier between the I/O channels and the inter-module communication bus. There is no isolation between channels unless otherwise noted. If any of the channels on a module are wired at a hazardous potential, make sure that all other devices or circuits connected to that module are properly insulated from human contact.
- Do *not* share the external supply voltages (the V and C terminals) with other devices (including other FieldPoint devices), unless those devices are isolated from human contact.
- For Compact FieldPoint, you *must* connect the protective earth (PE) ground terminal on the cFP-BP-*x* backplane to the system safety ground. The backplane PE ground terminal has the following symbol stamped beside it: . Connect the

backplane PE ground terminal to the system safety ground using 14 AWG (1.6 mm) wire with a ring lug. Use the 5/16 in. panhead screw shipped with the backplane to secure the ring lug to the backplane PE ground terminal.

- As with any hazardous voltage wiring, make sure that all wiring and connections meet applicable electrical codes and commonsense practices. Mount terminal bases and backplanes in an area, position, or cabinet that prevents accidental or unauthorized access to wiring that carries hazardous voltages.
- Operate the [c]FP-CTR-502 only at or below Pollution Degree 2. Pollution Degree 2 means that only nonconductive pollution occurs in most cases. Occasionally, however, a temporary conductivity caused by condensation must be expected.
- Refer to the FieldPoint product label for regulatory certification under hazardous location standards. If the FieldPoint product is not certified for operation in hazardous locations, do not operate it in an explosive atmosphere or where there may be flammable gases or fumes.

Specifications

The following specifications are typical for a range of -40 to 70 °C unless otherwise noted.

Input

Number of channels	12 (eight count, four gate)
Input type	5–30 VDC sourcing, compatible with TTL devices and other 5, 12, or 24 VDC devices
Maximum input voltage.....	30 VDC
Input threshold level (V_{sup} is the external supply voltage)	
Typical	$V_{sup} - 2.5$ V
Maximum	$V_{sup} - 2.0$ V
Minimum.....	$V_{sup} - 3.0$ V
Input current limiting	6 mA

Input bandwidth	
Count inputs	50 kHz or software-enabled 200 Hz lowpass filter
Gate inputs.....	50 kHz
Minimum input pulse width.....	10 μ s with 50 kHz, 2.5 ms with 200 Hz
Maximum off-state leakage current for external devices.....	
	0.3 mA

Output

Number of channels	4
Output type	5–30 VDC sinking, compatible with TTL devices and other 5, 12, or 24 VDC devices
Supply voltage	5 to 30 VDC, user-provided
Maximum output current	
Per channel	1 A
Across all channels.....	4 A
Output impedance	0.12 Ω
Output bandwidth	16 kHz for a current flow ≥ 3.2 mA
Maximum offstate leakage current ...	50 μ A

Physical Characteristics

Indicators	Green POWER and READY indicators, 16 green input/output state indicators
Weight	
FP-CTR-502	130 g (4.5 oz)
cFP-CTR-502	100 g (3.4 oz)

Power Requirements

Power from network module	800 mW
---------------------------------	--------

Isolation Voltage

Channel-to-channel isolation.....	No isolation between channels
-----------------------------------	----------------------------------

Transient overvoltage.....2,300 V_{rms}

Environmental

FieldPoint modules are intended for indoor use only. For outdoor use, FieldPoint modules must be mounted inside a sealed enclosure.

Operating temperature-40 to 70 °C

Storage temperature-55 to 85 °C

Humidity 10 to 90% RH,
noncondensing

Maximum altitude.....2,000 m

Pollution Degree 2

Shock and Vibration

Operating shock, panel mount (IEC 68-2-27)

cFP-CTR-502..... 50 g, 3 ms half sine, 3 shocks;
30 g, 11 ms half sine, 3 shocks

Operating vibration, random (IEC 60068-2-34)

FP-CTR-502 10–500 Hz, 2.2 g_{rms}

cFP-CTR-502 10–500 Hz, 5 g_{rms}

Operating vibration, sinusoidal (IEC 60068-2-6)

FP-CTR-502 10–500 Hz, 5 g

cFP-CTR-502 10–500 Hz, 5 g

Safety

The [c]FP-CTR-502 is designed to meet the requirements of the following standards for safety and electrical equipment for measurement, control, and laboratory use.

- EN 61010-1, IEC 61010-1
- UL 3121-1
- CAN/CSA C22.2 No. 1010.1

For certifications under regulatory standards, including hazardous location standards, refer to the product label or to ni.com.

Electromagnetic Compatibility

CE, C-Tick and FCC Part 15 (Class A) Compliant

Electromagnetic emissionsEN 55011 Class A at 10 m
FCC Part 15A above 1 GHz



Note For full EMC compliance, you must operate this device with shielded cabling. See the Declaration of Conformity (DoC) for this product for any additional regulatory compliance information. To obtain the DoC for this product, click **Declaration of Conformity** at ni.com/hardref.nsf/.

Mechanical Dimensions

Figure 13 shows the mechanical dimensions of the FP-CTR-502 installed on a terminal base. Dimensions are given in millimeters [inches]. If you are using the cFP-CTR-502, refer to the Compact FieldPoint controller user manual for the dimensions and cabling clearance requirements of the Compact FieldPoint system.

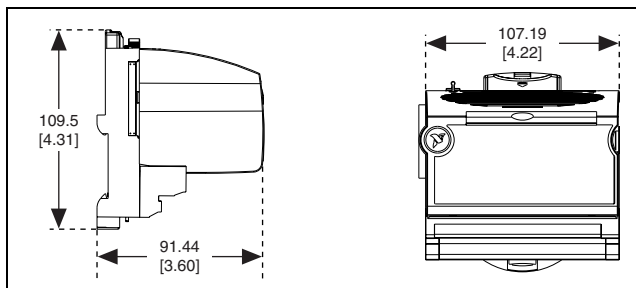


Figure 13. FP-CTR-502 Mechanical Dimensions

Where to Go for Support

For more information about setting up the FieldPoint system, refer to these National Instruments documents:

- FieldPoint network module user manual
- Other FieldPoint I/O module operating instructions
- FieldPoint terminal base operating instructions

Go to ni.com/support for the most current manuals, examples, and troubleshooting information.

For telephone support in the United States, create your service request at ni.com/ask and follow the calling instructions or dial 512 795 8248. For telephone support outside the United States, contact your local branch office:

Australia 03 9879 5166, Austria 0662 45 79 90 0,
Belgium 02 757 00 20, Brazil 55 11 3262 3599,
Canada (Calgary) 403 274 9391,
Canada (Montreal) 514 288 5722,
Canada (Ottawa) 613 233 5949, Canada (Québec) 514 694 8521,
Canada (Toronto) 905 785 0085, China 86 21 6555 7838,
Czech Republic 02 2423 5774, Denmark 45 76 26 00,
Finland 09 725 725 11, France 01 48 14 24 24,
Germany 089 741 31 30, Greece 01 42 96 427,
Hong Kong 2645 3186, India 91 80 4190000,
Israel 03 6393737, Italy 02 413091, Japan 03 5472 2970,
Korea 02 3451 3400, Malaysia 603 9596711,
Mexico 001 800 010 0793, Netherlands 0348 433466,
New Zealand 09 914 0488, Norway 32 27 73 00,
Poland 22 3390 150, Portugal 210 311 210, Russia 095 238 7139,
Singapore 65 6 226 5886, Slovenia 3 425 4200, South
Africa 11 805 8197, Spain 91 640 0085, Sweden 08 587 895 00,
Switzerland 056 200 51 51, Taiwan 02 2528 7227,
United Kingdom 01635 523545